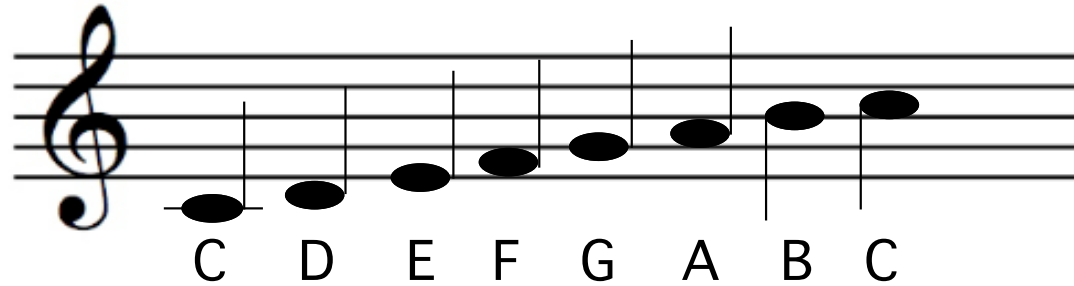


Table of Contents

- The C Major Scalepage 2
- Low To High Notespage 3
- High To Low Notespage 4
- 2/4 Quarter Notespage 5
- 3/4 Quarter Notespage 6
- 2/4 Eighth Notespage 7
- 1/4 Sixteenth Notespage 8

The C Major Scale



C D E F G A B C
Do Re Mi Fa Sol La Ti Do

4

4

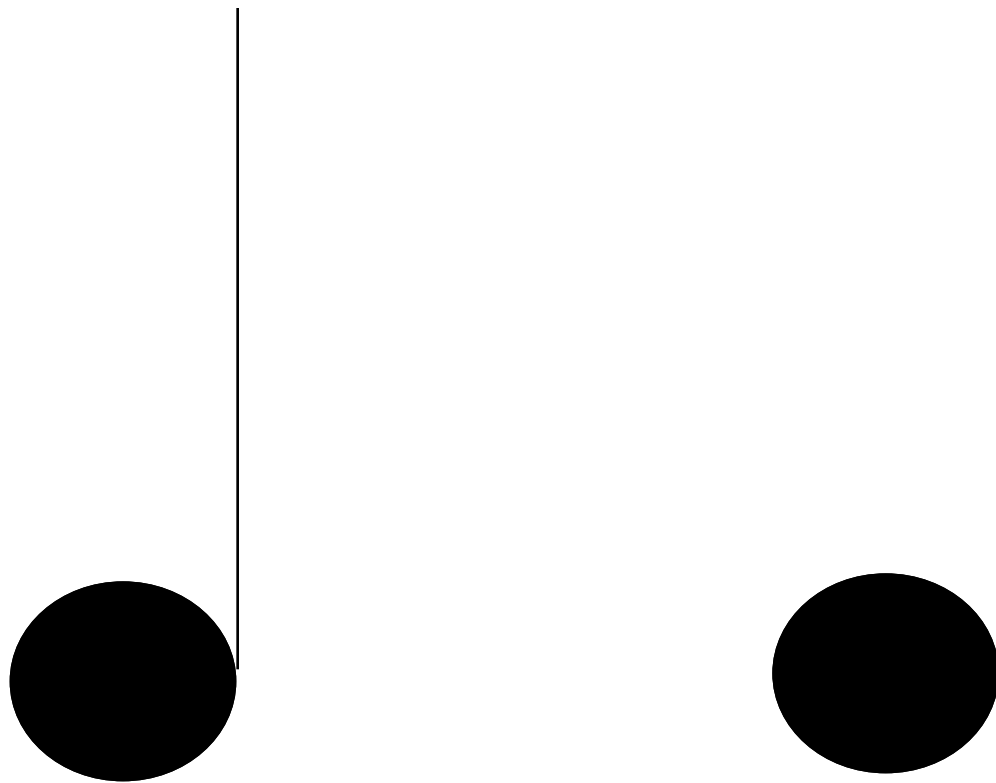
High Notes

Low To

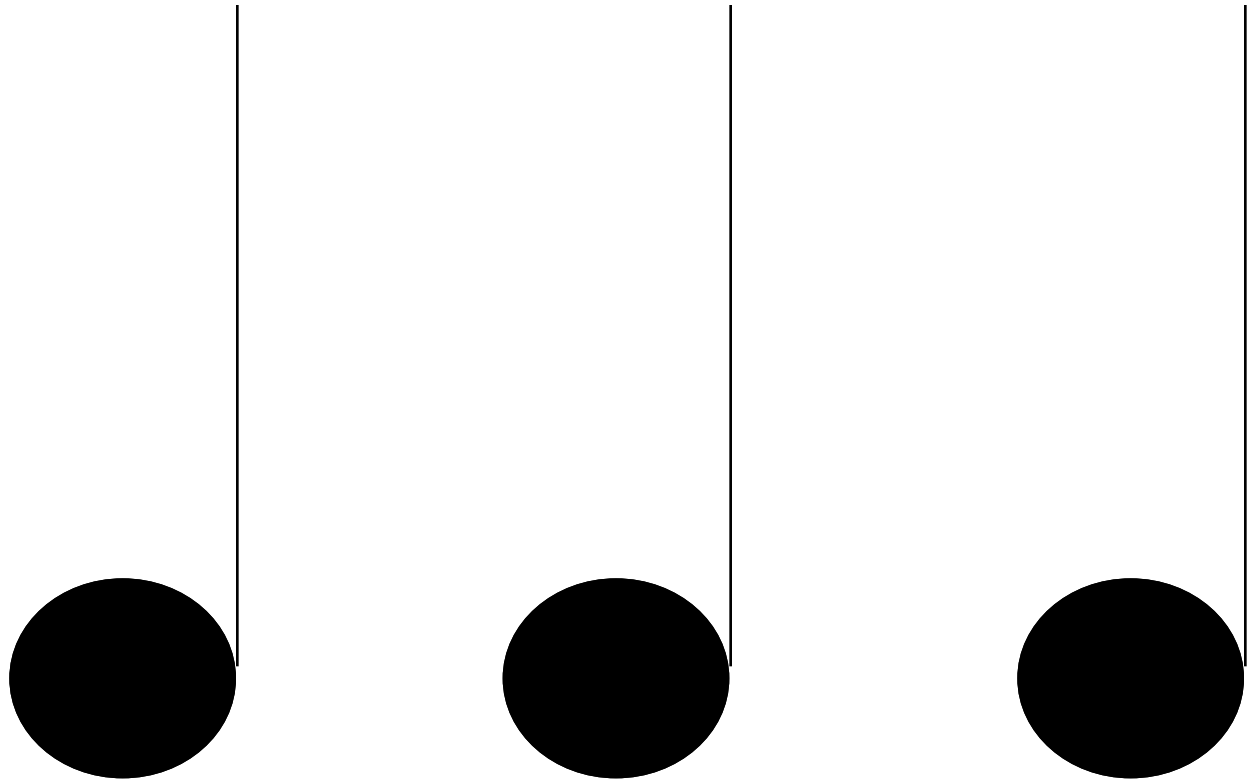
The image displays large graphic notation for a 4/4 time signature and four notes. On the left, a large number '4' is positioned above a horizontal line, with another large number '4' below the line. To the right of the line, there are four notes represented by black ovals with vertical stems. The first two notes are positioned low, with the word 'Low' centered below the first and 'To' centered below the second. The last two notes are positioned high, with the word 'High' centered above the first and 'Notes' centered above the second.

The image displays a large graphic notation system. On the left, a horizontal line is positioned between two large black numbers '4'. To the right of this line, the words 'High' and 'To' are written in a large, black, sans-serif font. Below 'High' and 'To', there are two identical musical notations. Each notation consists of a vertical line extending upwards from a low point to a high point, with a solid black oval at the top. Below these two notations, the words 'Low' and 'Notes' are written in a large, black, sans-serif font. The overall layout is clean and minimalist, using black and white.

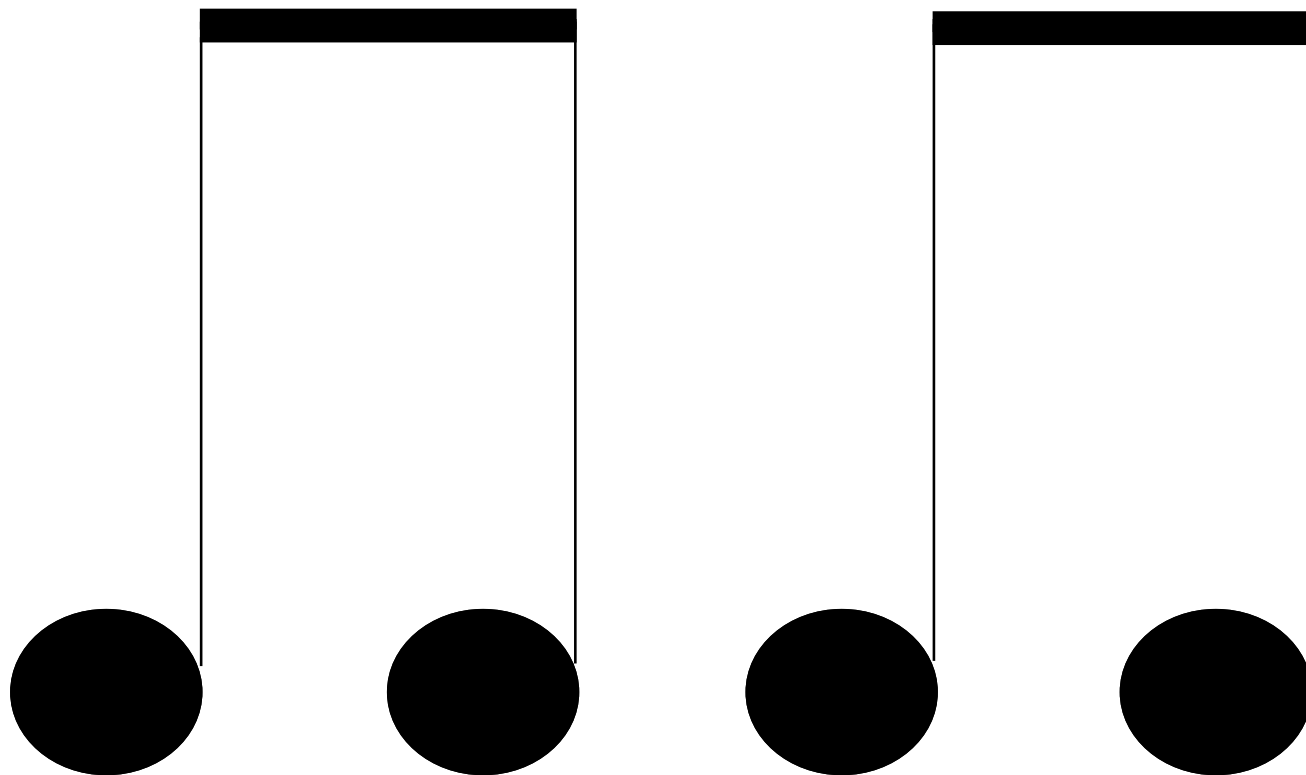
2
—
4



3
—
4



2
—
4



1
—
4

